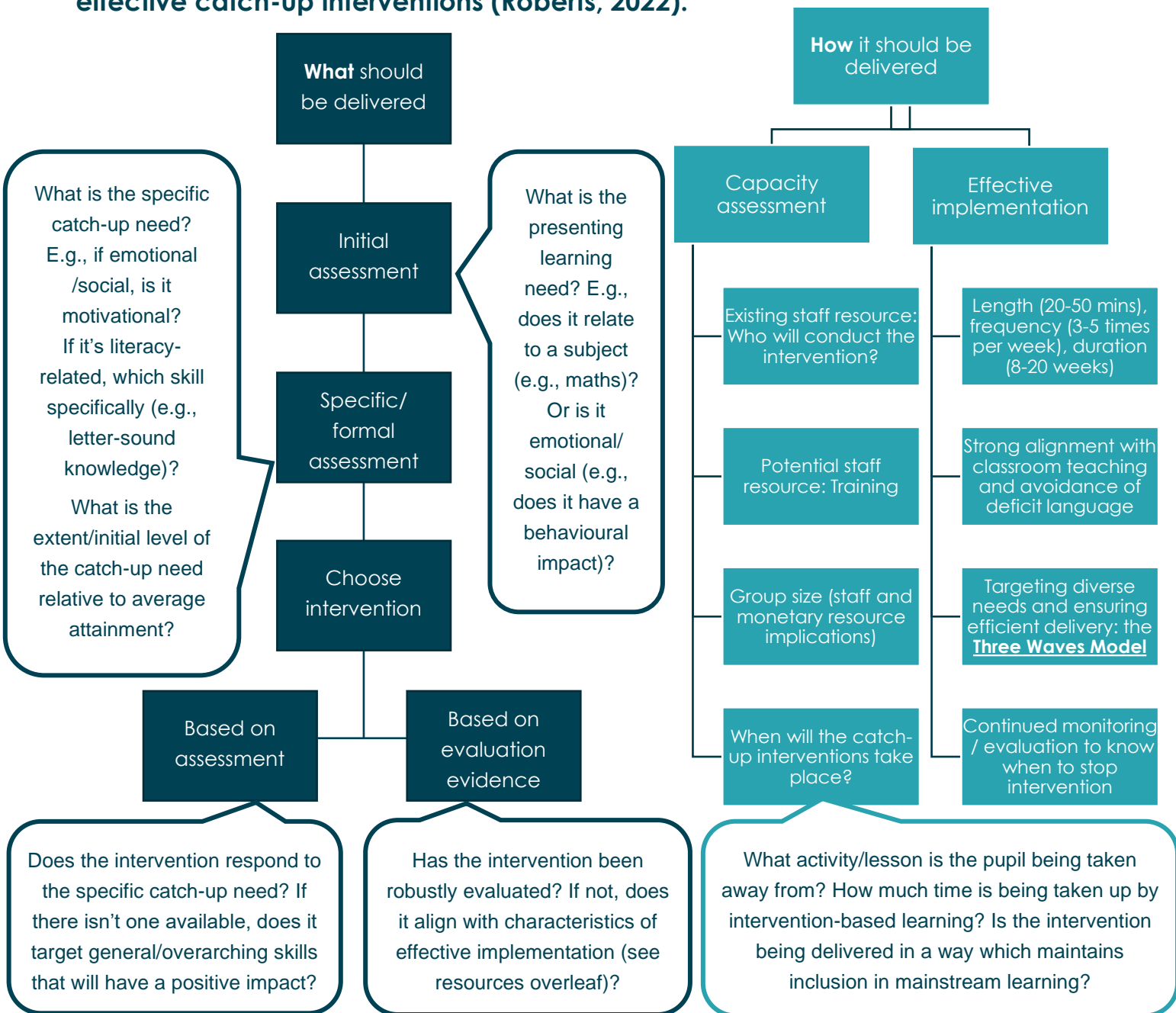




Effective catch-up interventions: A practical set of prompts

Catch-up interventions can make a substantial contribution to education recovery, if they are planned and delivered effectively. This document highlights key considerations for schools and teachers when choosing and delivering catch-up interventions. It should be read in conjunction with WCPP's briefing on effective catch-up interventions (Roberts, 2022).



Good practice – assessment and monitoring:

- ✓ Use national numerical and reasoning tests to identify pupils' skill-specific catch-up needs
- ✓ Provide catch-up interventions that specifically target those recovery needs
- ✓ Test pupils on a regular basis and remove from intervention as they acquired those skills
- ✓ Continue to monitor pupils post-intervention so they can be brought back in if they fall behind

Good practice elements:

- Robust assessments to identify and baseline needs
- Specific interventions chosen based on the assessments to target needs
- Continued monitoring to avoid a culture of continued intervention and ensure ongoing support

Resources – WHAT to deliver:

A list of available interventions broken down by themes/area, along with a summary of the evaluation evidence that underlies them is available on the Education Endowment Foundation's website [here](#).

Resources – HOW to deliver:

See EEF's [guidance report on using teaching assistants](#) and their [Teaching and Learning Toolkit](#) for more information on effective catch-up intervention strategies (e.g. optimal duration and frequency, group size vs teaching quality).

Find out more

For an accompanying policy briefing which reviews and summarises the evidence on catch-up interventions in more detail, see: Roberts, M. (2022). [Effective catch-up interventions](#). Cardiff: WCPP.

Author details

Manon Roberts is a Research Associate at the Wales Centre for Public Policy.

About the Wales Centre for Public Policy

Here at the Centre, we collaborate with leading policy experts to provide ministers, the civil service and Welsh public services with high quality evidence and independent advice that helps them to improve policy decisions and outcomes.

Funded by the Economic and Social Research Council and Welsh Government, the Centre is

based at Cardiff University and a member of the UK's What Works Network.

For further information contact:

Manon Roberts

+44 (0)29 2087 5345

manon.roberts@wcpp.org.uk

Wales Centre for Public Policy

Cardiff University, Sbarc/Spark, Maindy Road, Cardiff CF24 4HQ



www.wcpp.org.uk



029 2087 5345



info@wcpp.org.uk



@WCfPP



Llywodraeth Cymru
Welsh Government